

Supporting information

Calcium manganese-based pancatalytic nanozyme as cell pyroptosis inhibitor for efficient inflammatory bowel disease treatment

Lili Liu,^{a,#} Wenting Ye,^{b,#} Yanqiu Duan,^c Xinran Song,^d Li Ding,^{e,} Yu Chen^{d,*} and Meiqi Chang,^{c,*}*

^aSchool of Medicine, Shanghai University, Shanghai, 200444, P. R. China

^bShanghai Municipal Hospital of Traditional Chinese Medicine, Shanghai University of Traditional Chinese Medicine, Shanghai 200071, P. R. China.

^cLaboratory Center, Shanghai Municipal Hospital of Traditional Chinese Medicine, Shanghai University of Traditional Chinese Medicine, Shanghai 200071, P. R. China.
Email: changmeiqi@vip.sina.com

^dMaterdicine Lab, School of Life Sciences, Shanghai University, Shanghai 200444, P. R. China.
Email: chenyuedu@shu.edu.cn

^eDepartment of Medical Ultrasound, Shanghai Tenth People's Hospital, Tongji University Cancer Center, School of Medicine, Tongji University, Shanghai 200072, P. R. China.
Email: dingli@tongji.edu.cn

[#]These authors contributed equally to this work.

Supplementary figures

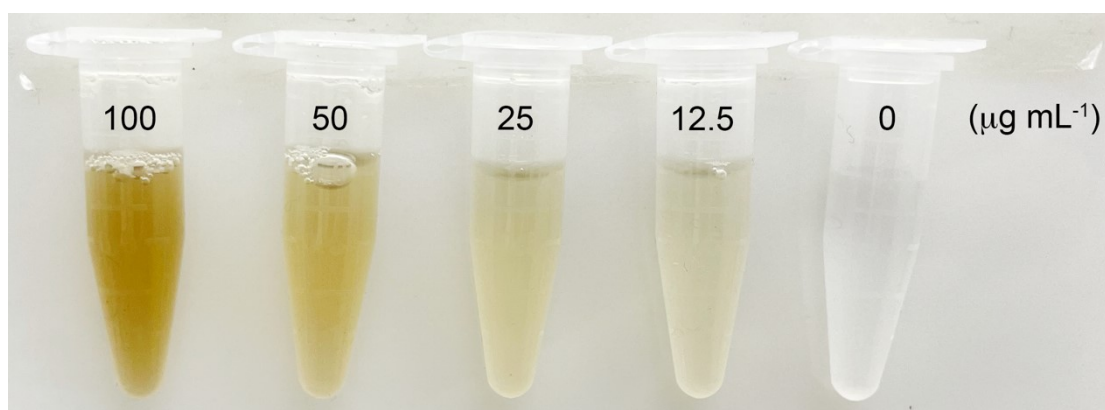


Figure S1. Different concentrations of CaMn_2O_4 dissolved in water.

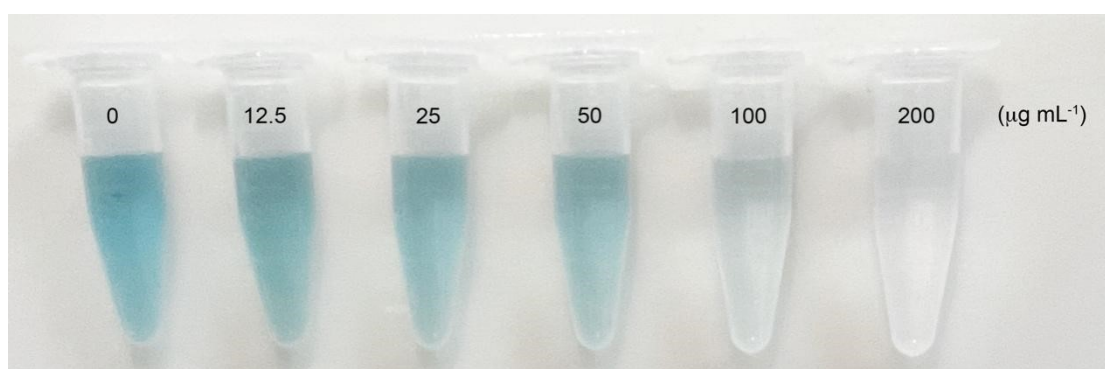


Figure S2. Digital photograph of CaMn_2O_4 concentration-dependent ABTS scavenging ability.

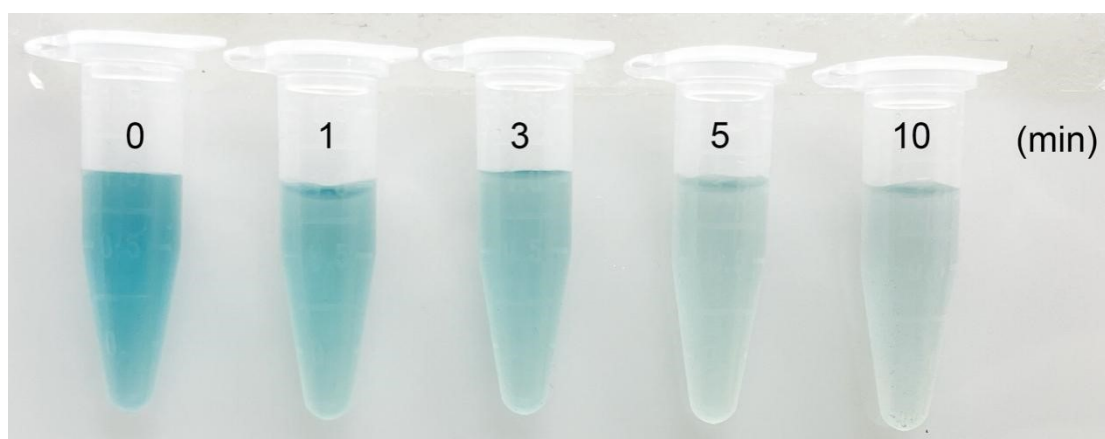


Figure S3. Digital photograph of CaMn_2O_4 time-dependent ABTS scavenging ability.

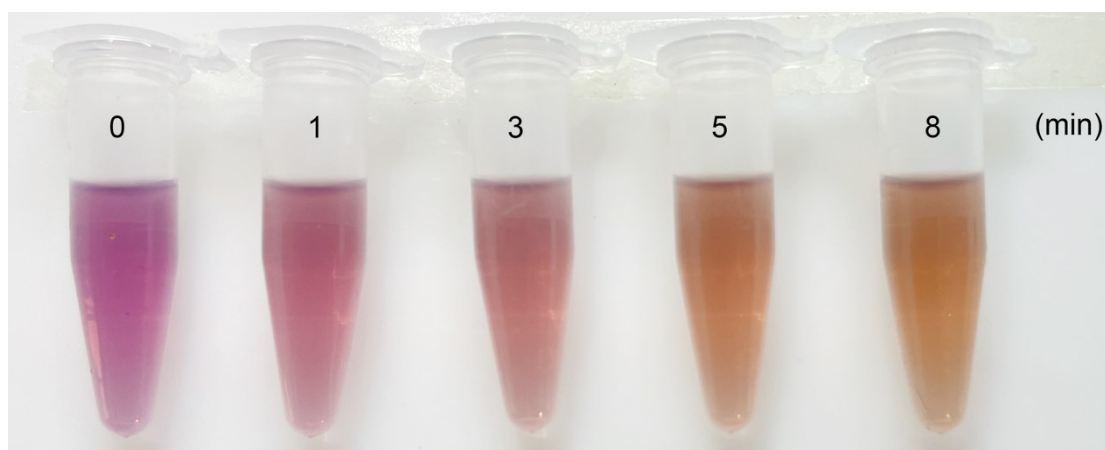


Figure S4. Digital photograph of CaMn_2O_4 time-dependent DPPH scavenging ability.

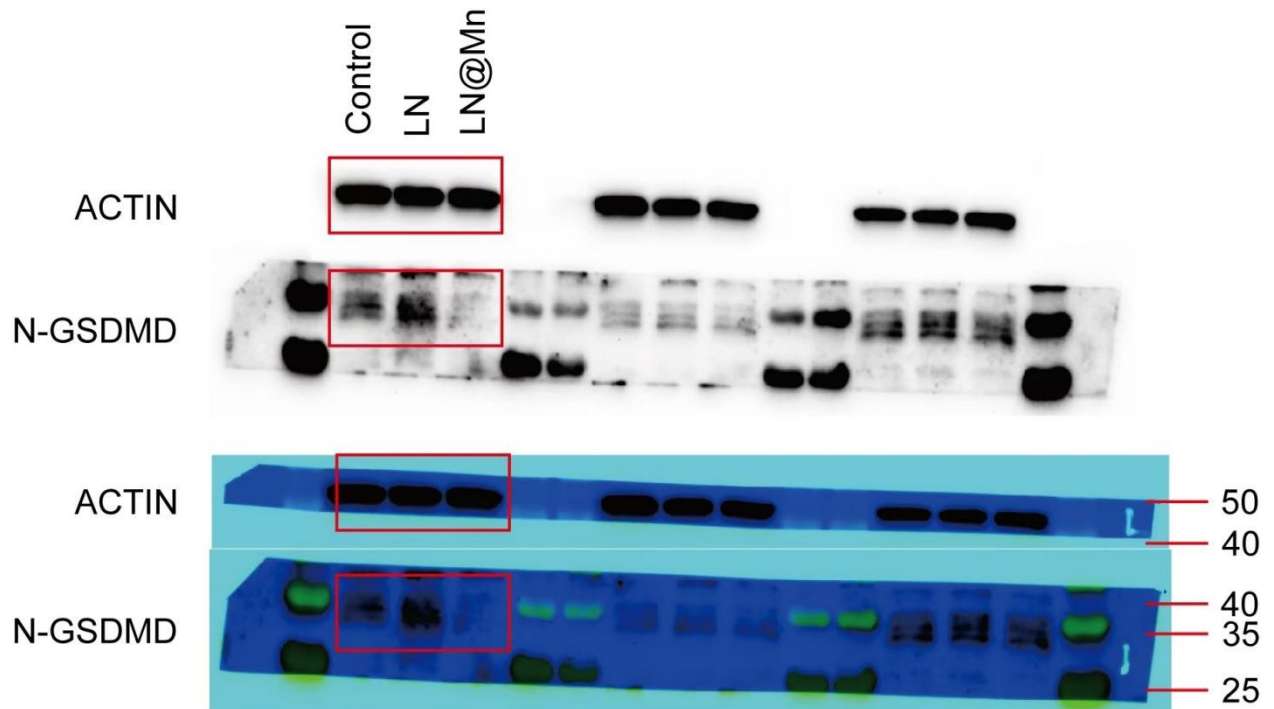


Figure S5. The raw data associated with figure 3c.

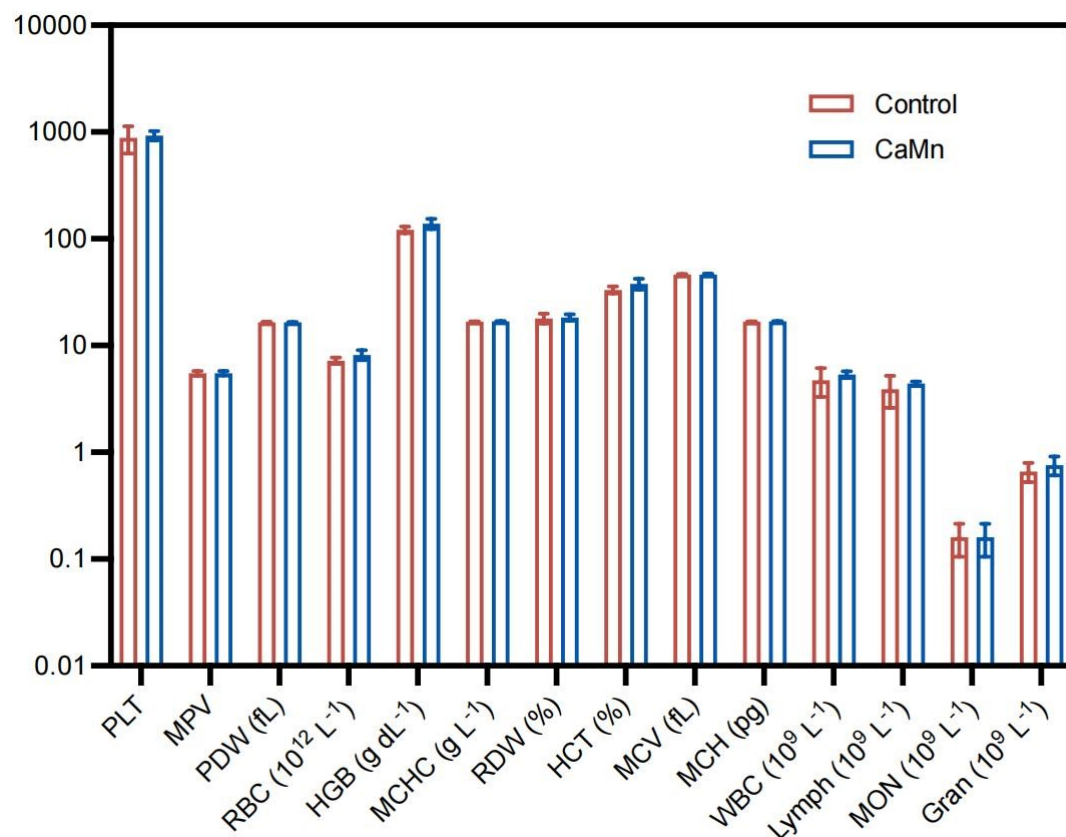


Figure S6. The routine blood indexes of the mouse after treatment with CaMn₂O₄ or normal saline, including platelets (PLT), mean platelet volume (MPV), platelet distribution width (PDW), red blood cell (RBC), hemoglobin (HGB), mean corpuscular hemoglobin concentration (MCHC), red

cell volume distribution width (RDW), hematocrit (HCT), mean corpuscular volume (MCV), mean corpuscular hemoglobin (MCH), white blood cell (WBC), lymphocytes (Lymph), monocytes (MON), and granulocyte (Gran) ($n = 5$). All data are shown as the mean \pm standard deviation (s. d.).

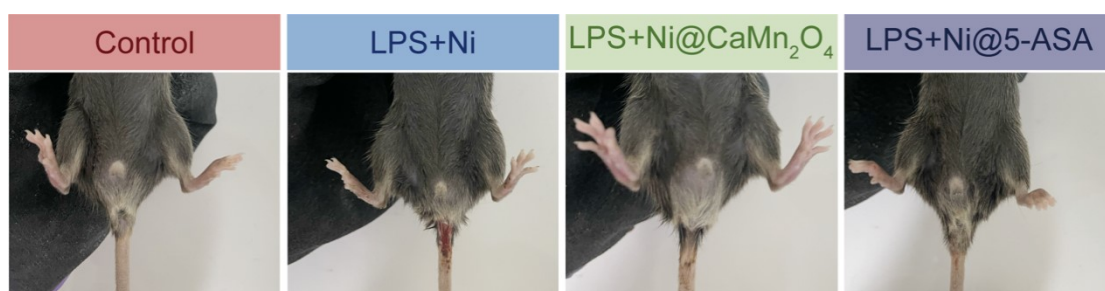


Figure S7. Representative digital photographs of blood in the stool after different treatments.



Figure S8. Representative digital photograph of spleen tissue after different treatments.